



FLORIDA DEPARTMENT OF TRANSPORTATION SEBASTIAN INLET STATE PARK NORTH PARKING LOT PARTIAL CLOSURE

State Road (S.R.) A1A/Jimmy Buffett Memorial Highway Over Sebastian Inlet Bridge Replacement Project
From south of the Sebastian Inlet in Indian River County to north of the Sebastian Inlet in Brevard County
Indian River and Brevard Counties, FL
Financial Project ID Number: 445618-1-52-01

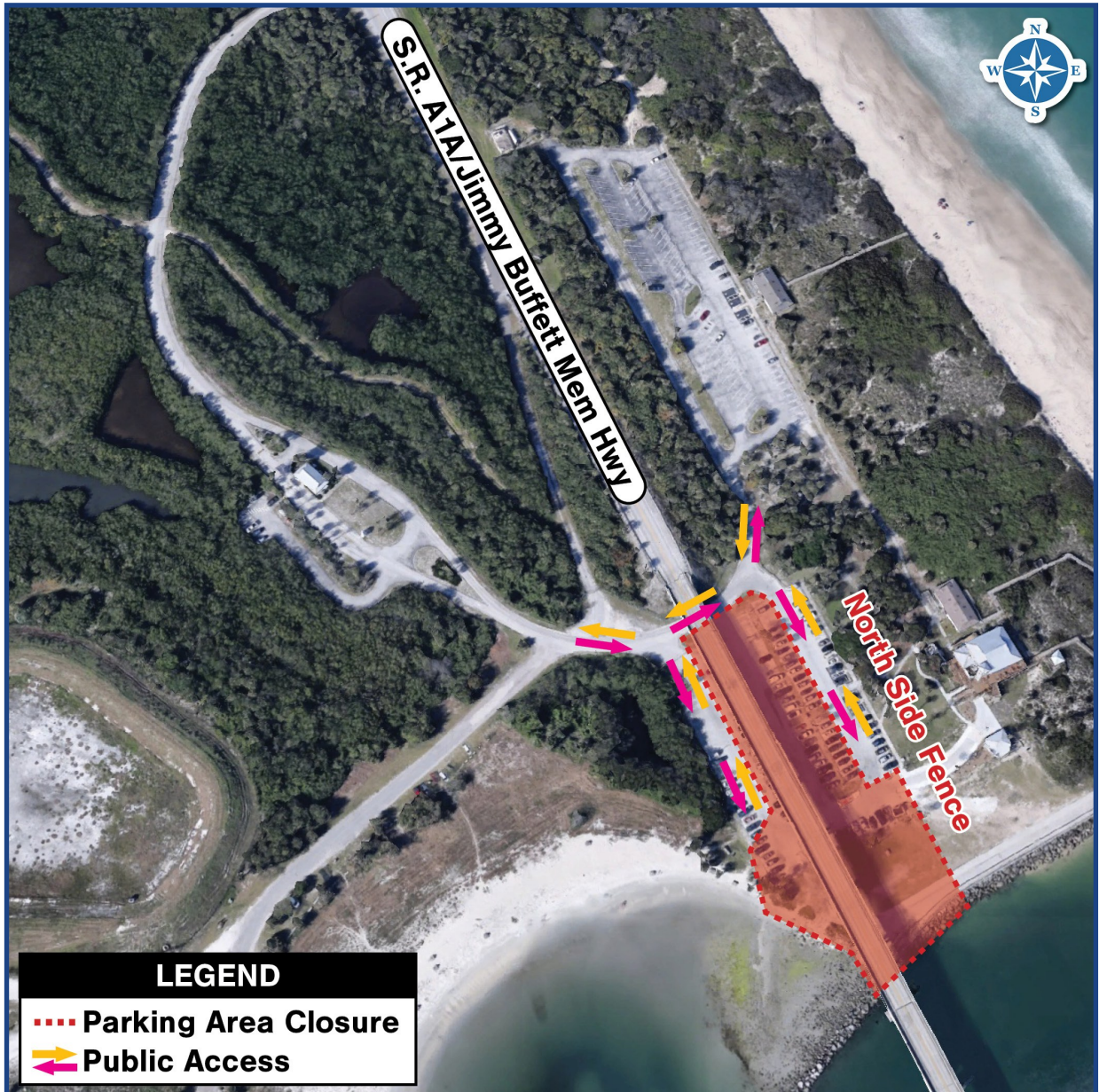
SEBASTIAN INLET STATE PARK NORTH PARKING LOT PARTIAL CLOSURE TO BEGIN JUNE 1, 2026

To enhance safety and long-term resiliency, the south section of the Sebastian Inlet State Park North Parking Lot will be partially closed around-the-clock beginning at 7 a.m. (subject to change) on Monday, June 1, 2026, weather permitting, through Spring 2032, for bridge construction activities.

The State Park and remaining portions of the North Parking Lot will remain open for public use. Limited parking will be available west of the bridge, south of the State Park entrance. One row of public parking will remain open east of the bridge along with the parking area northeast of the State Park entrance. The observation deck under the north side of the bridge will remain closed. Signage will be in place to assist motorists and pedestrians.

The partial closure of the North Parking Lot is necessary to safely and efficiently complete critical construction activities, including bridge and observation deck construction, temporary and permanent wall construction, drainage improvements, and milling and resurfacing of the existing parking lot.

For more information about the project including progress photos, lane closures, and project-specific information, please visit <https://www.d4fdot.com/projects/t4729>.



CONTACT INFORMATION

Josh Baker — FDOT Project Manager
joshua.baker@dot.state.fl.us or (772) 429-4930

Bill Stuckey, P.E. — Senior Project Engineer
bill.stuckey@consoreng.com or (407) 375-3783

Samantha Kayser — Community Outreach Specialist
skayser@corrado.com or (772) 579-5479

WEBSITE AND SOCIAL MEDIA

X/Instagram: @MyFDOT_SEFL

Facebook: @MyFDOTSEFL

Project website: www.d4fdot.com



Construction Cost: \$101.9 Million

Construction Start: June 2026

Estimated Completion: Spring 2032

FLORIDA DEPARTMENT OF TRANSPORTATION MISSION STATEMENT

The Florida Department of Transportation’s mission is to provide a safe statewide transportation system that promotes the efficient movement of people and goods, supports the state’s economic competitiveness, prioritizes Florida’s environment and natural resources, and preserves the quality of life and connectedness of the state’s communities.

Please contact the Community Outreach Specialist, Samantha Kayser, to be added to project email notification lists. Public participation is solicited without regard to race, color, national origin, age, sex, religion, disability, or family status. Para información y preguntas en Español, por favor llame al (954) 777-4302.